



Specifications

Lamp

Energy-efficient, low mercury, T8 tri-phosphor fluorescent, 3500K lamp. 3000K and 4100K optional

Ballast

Normal power factor, electronic ballast is standard. Optional high power factor, electronic ballast for increased energy efficiency.

Switch

Two-position black rocker on right side

Cord

9' cord with 90° southwest

Cord Exit

Right-hand is standard. Left-hand, field interchangeable, and hardwire optional.

City Code

Chicago and New York optional

Cord Color

Black is standard
Gray or neutral optional

Cord Rotation

Southwest is standard
Straight is optional

Lens

Prismatic lens is standard to diffuse light across a work surface. Linear prismatic (batwing) lens is optional to minimize reflective glare on the work surface.

Reflector

UV stable silver reflector optimizes light distribution and controls light output

Dimming

Optional multi-step

Finish

Light Corp standard colors or various office furniture manufacturers' colors

Daisy Chain

Optionally available to power up to 10 fixtures from one supply cord. Multiple cord exit positions.

Mounting (must specify)

Safety keyhole slots for wood or laminate installations. Spring bars for metal shelves.

Sensor

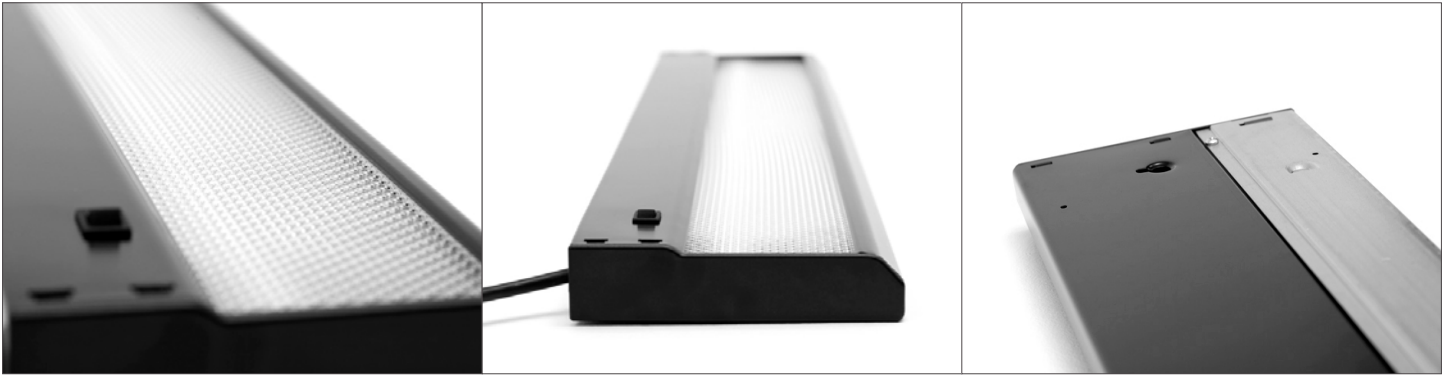
Optional Isolé eight outlet power strip with remote occupancy sensor control of six outlets, LED grounding indication, and on/off switching. (See Isolé cut sheet for specifications).

Certifications

UL, cUL

Recyclability

90% Recyclable



Base Models

Base Number	Length	Wattage
VT 18	18.3"	15
VT 22	21.87"	15
VT 24	24.3"	17
VT 28	27.87"	17
VT 34	33.87"	17
VT 36	36.3"	25
VT 40	39.87"	25
VT 46	45.87"	25
VT 48	48.3"	32
VT 58	57.87"	32
VT 60	60.3"	40

Performance Test Installation Data

Base Number	VT 36
Lamp	T8 3500K
Ballast	electronic
Power Factor	NPF
Lens	prismatic
Reflector	metallized paper
Measured Plane	60" length x 30" width
Face of Light to Work Surface	17.5"

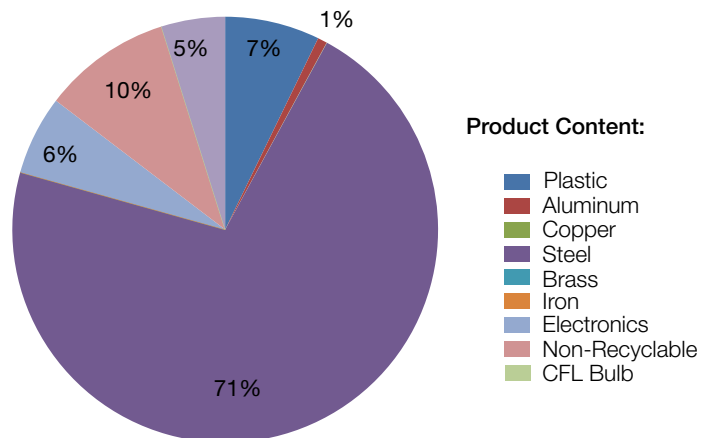
The **Wisteria VT** task light thrives in the underside of overhead bins or shelves. It's ideal for lighting desk areas or work surfaces in an office, library, dormitory, or laboratory—anywhere storage units or cabinets block overhead lighting. Wisteria features multiple options that can increase energy-efficiency while controlling light output. Warranted for 12 years, excluding lamp and ballast.



Footcandles Source at 17.5"

	24"	18"	12"	6"	CL	6"	12"	18"	24"
6"	27	52	83	104	116	104	83	52	27
12"	31	60	94	118	126	118	94	60	31
18"	27	51	78	99	107	99	78	51	27
24"	18	31	45	56	62	56	45	31	18

VT 36 Recyclability



W i s t e r i a

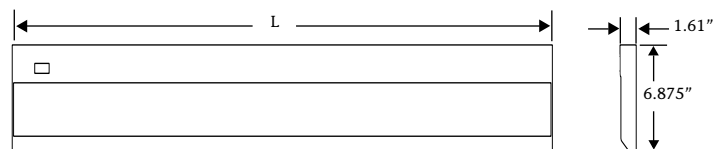
VT task light

VT base model includes:

- Energy efficient, low mercury T8 tri-phosphor 3500K fluorescent lamp
- Normal power factor electronic ballast (except VT60)
- 9' black power cord with 90° plug, sw rotation, right hand exit
- Black rocker switch, 2 position, right side of fixture
- Prismatic lens
- UV stable silver reflector
- Mounting hardware package - must specify
- Paint finish - must specify
- UL / cUL listed



Base Number	Suggested Shelf Size	Actual Length	Lamp Wattage
VT 18	24"	18.30"	15
VT 22	24"	21.87"	15
VT 24	30"-36"	24.30"	17
VT 28	30"	27.87"	17
VT 34	36"	33.87"	17
VT 36	42"-48"	36.30"	25
VT 40	42"	39.87"	25
VT 46	48"	45.87"	25
VT 48	54"-60"	48.30"	32
VT 58	60"	57.87"	32
VT 60	72"	60.30"	40



Specifying notes:

- VT60 fixture includes a high power factor electronic ballast.
- The center cord (CC) option is not available on the VT18 or VT22.
- The left hand (LH) cord option is not available on the VT18 or VT22.
- Center switch is not available on the VT18 or VT 22.
- The field interchangeable cord (FIC) option is not available on the VT18 or VT22.
- When specifying the daisy chain (DC) option for the VT, specify one DCP (power cord fixture) and up to 9 DCJ (jumper cord fixture) - maximum total of 10 fixtures. See page 51 for more information.
- The power fixture in a daisy chain run can be specified as independent switching (DCP) or master control (MCDCP).
- The DCP is available with a straight plug only.
- All daisy chain fixtures are only available with black cords.
- Cord managers are automatically included with daisy chain option.
- The daisy chain option is not available when specifying a Chicago cord.
- Dimming options automatically include the high power factor electronic ballast option (ELE).
- DIM3 and MDIM are not available on the VT18, VT22 or VT60.
- Mounting options include spring bars for metal shelf, screws for metal screw mount, or wood screws for wood or laminate shelves. See pages 56-57 for manufacturer's cross reference codes.
- When specifying metallic colors on the VT, note that the end caps will be a non-metallic accent color.
- Cord covers are available in black (209), gray taupe (228), light tone (063), stone gray (062) and soft white (061); color code must be specified with size of cord cover.

Wisteria

VT task light

VT base model prices

Base Number	Suggested Shelf Size	Actual Length	List Price
VT 18	24"	18.30"	\$ 127.00
VT 22	24"	21.87"	136.00
VT 24	30"-36"	24.30"	137.00
VT 28	30"	27.87"	148.00
VT 34	36"	33.87"	151.00
VT 36	42"-48"	36.30"	152.00
VT 40	42"	39.87"	163.00
VT 46	48"	45.87"	168.00
VT 48	54"-60"	48.30"	170.00
VT 58	60"	57.87"	175.00
VT 60	72"	60.30"	235.00

Note: Suggested shelf size is based on the length of the task light. For assistance in determining size of shelf and brackets needed, refer to pages 56-57.

Option exceptions for VT

CC - not available on VT18, VT22, or VT24
 LH - not available on VT18 or VT22
 FIC - not available on VT18 or VT22
 DIM3 and MDIM - not available on VT18, VT22
 Center switch - not available on VT18 and VT 22

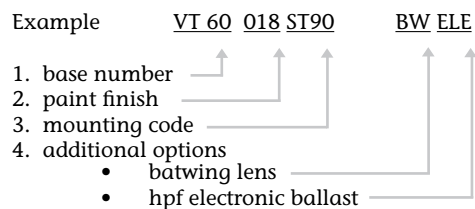
Cord cover color code

Finish	Code
Black	209
Gray taupe	228
Light tone	063
Stone gray	062
Soft white	061

VT option prices

Option	Description	Code	List Price
Lamp:	3000K	TRI30	\$ 0.00
	4100K	TRI41	0.00
Ballast:	High performance / High power factor electronic	ELE	40.00
	Cord exit:	Left hand	LH
	Center	CC	6.00
	Field interchangeable	FIC	12.00
	Hardwire	HW	0.00
Cord rotation:	Straight plughead	SP	0.00
Cord color: <small>Available on straight cords only</small>	Gray	SPGR	8.00
	Neutral	SPNL	8.00
Switch:	Center	CS	6.00
Interconnect:	Power (Independent switching)	DCP	46.00
	Daisy chain <small>All cords on daisy chain fixtures are black</small>	Power (Master control)	MCDPC
	Jumper cord 42"	DCJ42	26.00
	Jumper cord 54"	DCJ54	26.00
	Jumper cord 78"	DCJ78	26.00
Dimming: <small>Price of the ELE is included in price of this option</small>	3 position stepped	DIM3	50.00
	Multi position stepped	MDIM	167.00
Lens:	Linear prismatic (batwing)	BW	10.00
City code: (Chicago)	Fused plug -sw rotation	CHC9SW	48.00
	Fused plug -straight	CHC9ST	48.00
Cord manager:	Horizontal	CM1	3.00
	2- 2" vertical	CM2	3.00
	12" vertical	CM3	3.00
	Bag of 50 horizontal (CM1)	CM4	37.00
Cord cover:	24" cover (add color code)	CMC24	13.00
	48" cover (add color code)	CMC48	21.00

How to specify the VT task light



When choosing options refer to pages 48-53 to verify proper use.

- Specify base number for appropriate shelf size.
- Select paint finish from page 54.
- Specify mounting code from list.
- Select option code from list.

If manufacturer and system name code is not listed, identify them on your purchase order and a Light Corporation customer service rep will contact you on availability.